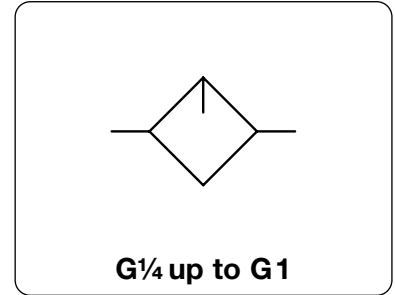


Description	Standard type mist lubricator which lubricates in proportion to flow rate. The modular lubricator can be interlocked with other instruments of the same series. Wall mounting through two drilled holes in the body, except for L095.	
Bowl	plastic version with bowl guard	
Operating pressure	max. 12,5 bar,	max. 16 bar for Series 042 max. 7 bar for lubricator with oil level indicator
Oil refilling	with semiautomatic oil refilling the oil is drawn into the bowl by a vacuum at the push of a button without need to interrupt operation.	
Oil level indicator	if the oil level falls below the limit value, a float will close a signal contact. Contact: NO Voltage: max. 115 V	
Temperature range	0 °C to 50 °C / 32 °F to 122 °F	
Material	Body: nylon, POM at Series 042 Bowl: polyamide	Elastomer: NBR/Buna-N Inner valve: brass



Dimensions			Bowl	Flow	Operating	Connection	Order	
A	B	C	Design	Capacity	rate	pressure	thread	number
mm	mm	mm	made of / with	l	m ³ /h*1	l/min*1	max. bar	G

Lubricator, made of plastic				operating pressure max. 12.5 / 16 bar			L0		
42	157	105	plastic	0.04	120	2 000	16.0	G $\frac{1}{4}$	L042-02
52	185	127	bowl guard	0.07	120	2 000	12.5	G $\frac{3}{8}$	L050-03
52	185	127		0.07	126	2 100	12.5	G $\frac{1}{2}$	L052-04
63	227	159		0.14	210	3 500	12.5	G $\frac{1}{2}$	L075-04
137	227	159		0.14	216	3 600	12.5	G $\frac{3}{4}$	L080-06
95	300	220		0.44	900	15 000	12.5	G1	L095-08



L042 L052
semiautomatic oil refilling

Special options, add the appropriate letter

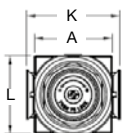
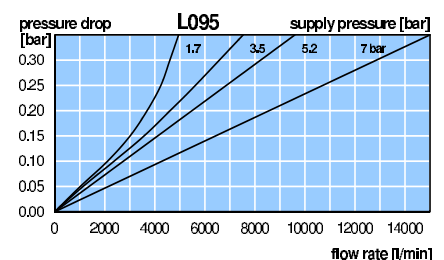
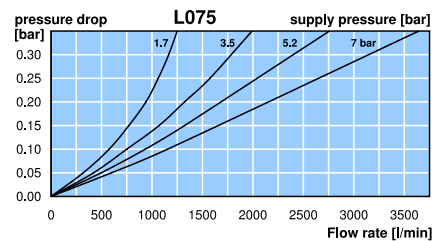
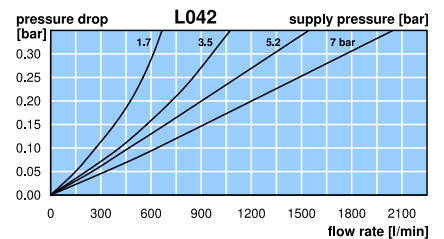
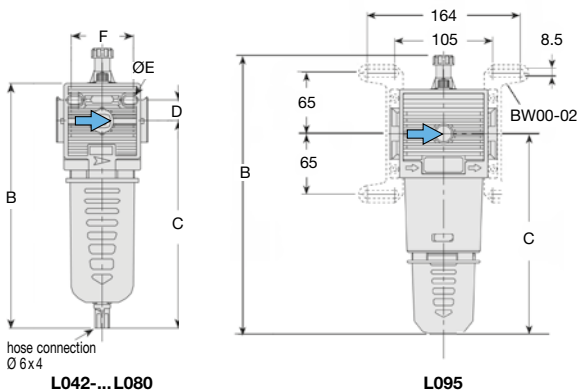
semiautomatic oil refilling	P _{min.} 3 bar		for L042 to L080	L0...0.X65
oil level indicator	P _{max.} 7 bar	115 V/NO	for L050 to L095	L0...0.X66



L075 L080

Accessories, enclosed

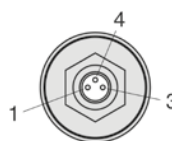
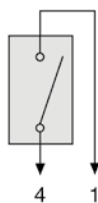
set of brackets	made of steel	for L095	BW00-02
-----------------	---------------	----------	----------------



Series	D	Ø E	F	K	L
L042	10.5	4.5	31	-	42
L050/52	16	5.5	41	63	52
L075	17.5	5.5	45	75	63
L080	17.5	5.5	45	-	63
L095	-	-	-	115	95



oil level indicator



oil level indicator

*1 at 10 bar operating pressure and 0.33 bar pressure drop

* Product group

Extensions: see chapter for FRL service units

PDF CAD
www.aircom.net



Order example:
L042-02